

# Table of Contents

<b>USB Driver Installation Guide .....</b>	<b>1</b>
Installing the USB Driver on Linux .....	1
Installing the USB Driver on MAC OS X .....	4
Installing the USB Driver on Windows XP/2K/ME/98SE.....	10

# USB Driver Installation Guide

---

You need to install the USB driver on your PC before using the USB connection. The installation process of the USB driver varies on different systems. The following provides instructions for three systems: Linux, MAC OS 9/10, and Windows.

## Installing the USB Driver on Linux

---

- 1) Start **RedHat 8.0**, and select **install all**.
- 2) Log in as **root**.
- 3) Execute the following commands:

```
#cd /usr/src
```

```
[root@ys src1]# pwd
/usr/src
[root@ys src1]# ls -l
total 8
lrwxrwxrwx 1 root root 15 Feb 28 2006 linux-2.4 -> linux-2.4.1
8-14
drwxr-xr-x 17 root root 4096 Feb 28 12:15 linux-2.4.18-14
drwxr-xr-x 7 root root 4096 Feb 28 2006 redhat
```

```
#ln -s linux-2.4.18-14 linux(it is Kernel 2.4.20-8 in
RedHat 9.0)
```

```
[root@ys src1]# ln -s linux-2.4.18-14 linux
[root@ys src1]# ls -l
total 8
lrwxrwxrwx 1 root root 15 Feb 28 14:58 linux -> linux-2.4.18-14
lrwxrwxrwx 1 root root 15 Feb 28 2006 linux-2.4 -> linux-2.4.1
8-14
drwxr-xr-x 17 root root 4096 Feb 28 12:15 linux-2.4.18-14
drwxr-xr-x 7 root root 4096 Feb 28 2006 redhat
```

- 4) Copy the original codes to the `/root/MT882` directory

```
[root@ys MT882]# pwd
/root/MT882
[root@ys MT882]# ls
inc makefile src
```

5) #cd /root/MT882

# make clean

# make all

```
root@ys MT8821# pwd
/root/MT882
root@ys MT8821# make clean
rm -f ./src/CDCEther.o ./src/CDCEther.o *.o .depend ./VKGEther
root@ys MT8821# make all
gcc -c -O2 -Wall -Wno-missing-braces -Wstrict-prototypes -fomit-frame-pointer -
fno-strict-aliasing -pipe -fno-strength-reduce -mcpu=i486 -falign-loops=2 -falign
n-jumps=2 -falign-functions=2 -I/usr/src/linux/include -I./inc -D__KERNEL__ -DM
ODULE -Dlinux -DDBG=0 -o src/CDCEther.o src/CDCEther.c
ld -r -o ./VKGEther ./src/CDCEther.o
```

6) Add alias eth1 VKGEther to /etc/modules.conf.

# vi /etc/modules.conf

```
alias parport_lowlevel parport_pc
alias eth0 vmnics
alias scsi_hostadapter BusLogic
alias sound es1371
post-install sound-slot-0 /bin/aumix-minimal -f /etc/.aumixrc -L >>dev/null 2>&1
!! :
pre-remove sound-slot-0 /bin/aumix-minimal -f /etc/.aumixrc -S >>dev/null 2>&1 !
! :
alias usb-controller usb-uhci
alias eth1 VKGEther
```

7) Add ifcfg-eth1 file to /etc/sysconfig/network-scripts.

#/etc/sysconfig/network-scripts/ifcfg-eth1

Set IP to 172.168.1.3

```
DEVICE=eth1
BOOTPROTO=static
BROADCAST=192.168.1.255
IPADDR=192.168.1.3
NETMASK=255.255.255.0
NETWORK=192.168.1.0
ONBOOT=yes
```

8) Reboot Linux, and connect the USB cable to the ADSL modem.

9) Execute the following commands to configure the USB Network Interface Card:

#cd /root/MT882

#insmod ./VKGEther

```
root@sys MT8821# pwd
/root/MT882
root@sys MT8821# ls
UKGEther  inc  makefile  src
root@sys MT8821# insmod ./UKGEther
```

## 10) #ifconfig eth0 down

```
#ping 192.168.1.2
```

```
root@sys MT8821# ifconfig eth0 down
root@sys MT8821# ping 192.168.1.2
PING 192.168.1.2 (192.168.1.2) from 192.168.1.3 : 56(84) bytes of data:
64 bytes from 192.168.1.2: icmp_seq=1 ttl=64 time=1003 ms
64 bytes from 192.168.1.2: icmp_seq=2 ttl=64 time=1004 ms
64 bytes from 192.168.1.2: icmp_seq=3 ttl=64 time=1003 ms
64 bytes from 192.168.1.2: icmp_seq=4 ttl=64 time=1003 ms

--- 192.168.1.2 ping statistics ---
5 packets transmitted, 4 received, 20% loss, time 4006ms
rtt min/avg/max/mdev = 1003.168/1003.778/1004.579/0.880 ms, pipe 2

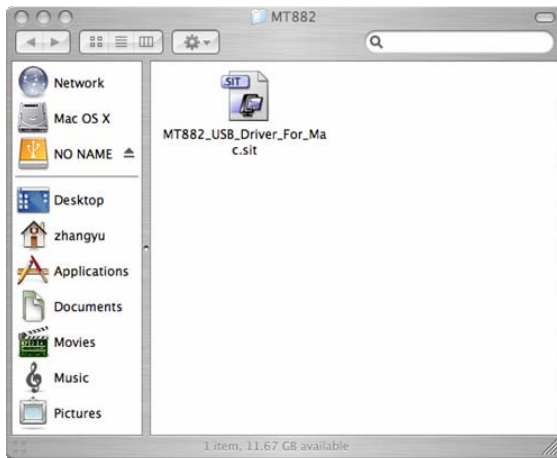
root@sys MT8821# ifconfig eth1
eth1      Link encap:Ethernet HWaddr 08:05:5D:00:00:04
          inet addr:192.168.1.3 Bcast:192.168.1.255 Mask:255.255.255.0
          UP BROADCAST RUNNING MULTICAST MTU:1500 Metric:1
          RX packets:16 errors:0 dropped:0 overruns:0 frame:0
          TX packets:37 errors:0 dropped:0 overruns:0 carrier:0
          collisions:0 txqueuelen:100
          RX bytes:1352 (1.3 Kb) TX bytes:2202 (2.2 Kb)
```

## Installing the USB Driver on MAC OS X

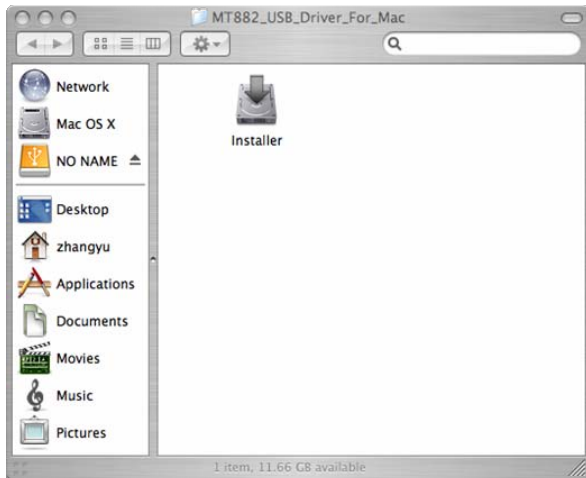
---

To install the MT882 USB Driver on a MAC OS X system, do the following:

- 1) Run the MAC USB driver from the CD-ROM provided with MT882, and decompress it.



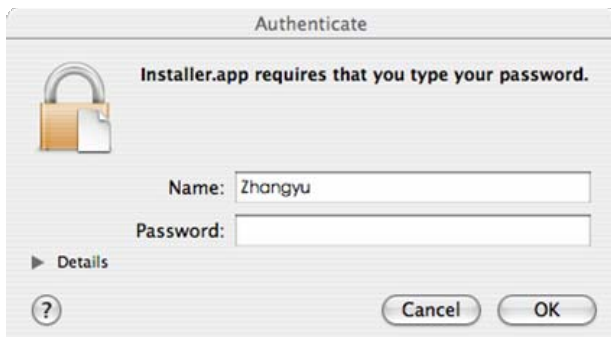
- 2) Double-click the Installer to start the installation.



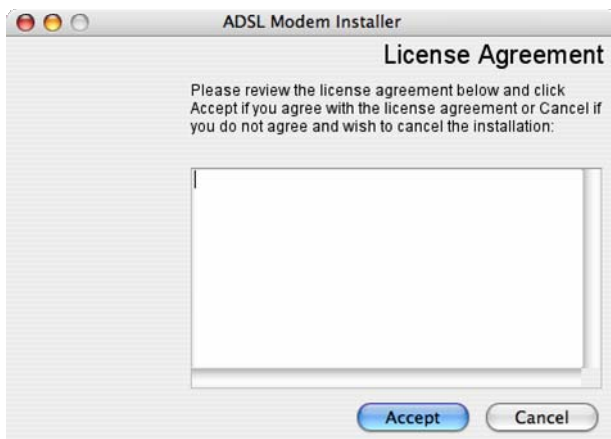
3) Click **Next** to display the **Authenticate** page.



4) Enter the name and password of the administrator, and click **OK**.



5) Read the information carefully and click **Accept**.



6) Select a destination folder to install and click **Next**.

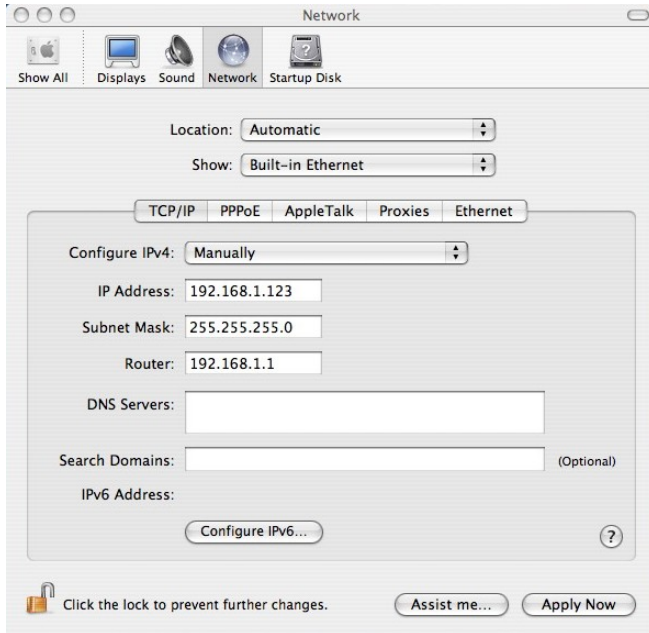


- 7) When the installation is complete, select **Restart now** and click **Finish** to restart your computer.



Then you need to configure the MAC network as follows:

- 1) On the menu bar, select **System Preferences > Network** to display the page as shown in the following figure.



- 2) Enter the values for these parameters and click **Apply Now**.
- 3) Launch your Web Browser and access <http://192.168.1.2> to display the **Login** page.


Server	192.168.1.2
Message	MT882
Username	admin ▼
Password	••••
	<input type="checkbox"/> Remember password
	Cancel OK

- 4) Enter the username and password, and click **OK** to log in to the Web GUI of MAC OS.

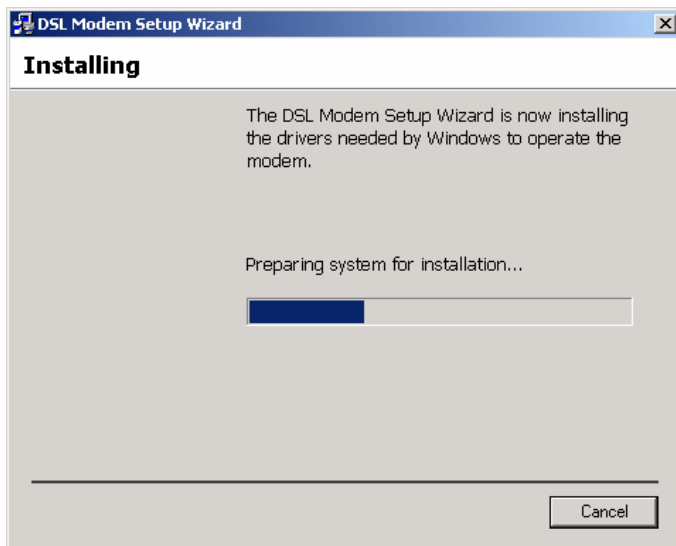
## Installing the USB Driver on Windows XP/2K/ME/98SE

---

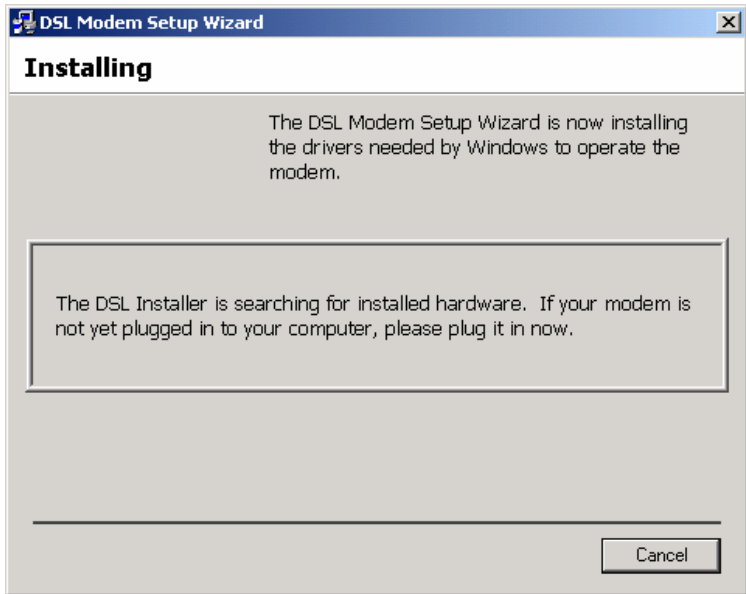
To install the USB driver on a Windows system, do the following:

 **Note:** Before installation, please do not connect the modem.

- 1) Double-click **Setup.exe** on the CD-ROM provided with MT882 to display the **Setup Wizard** window.



- 2) Connect the modem and power it on.  
Then the Installer will search the USB device for installation.



- 3) The system will automatically finish the installation of Huawei USB ADSL modem.

