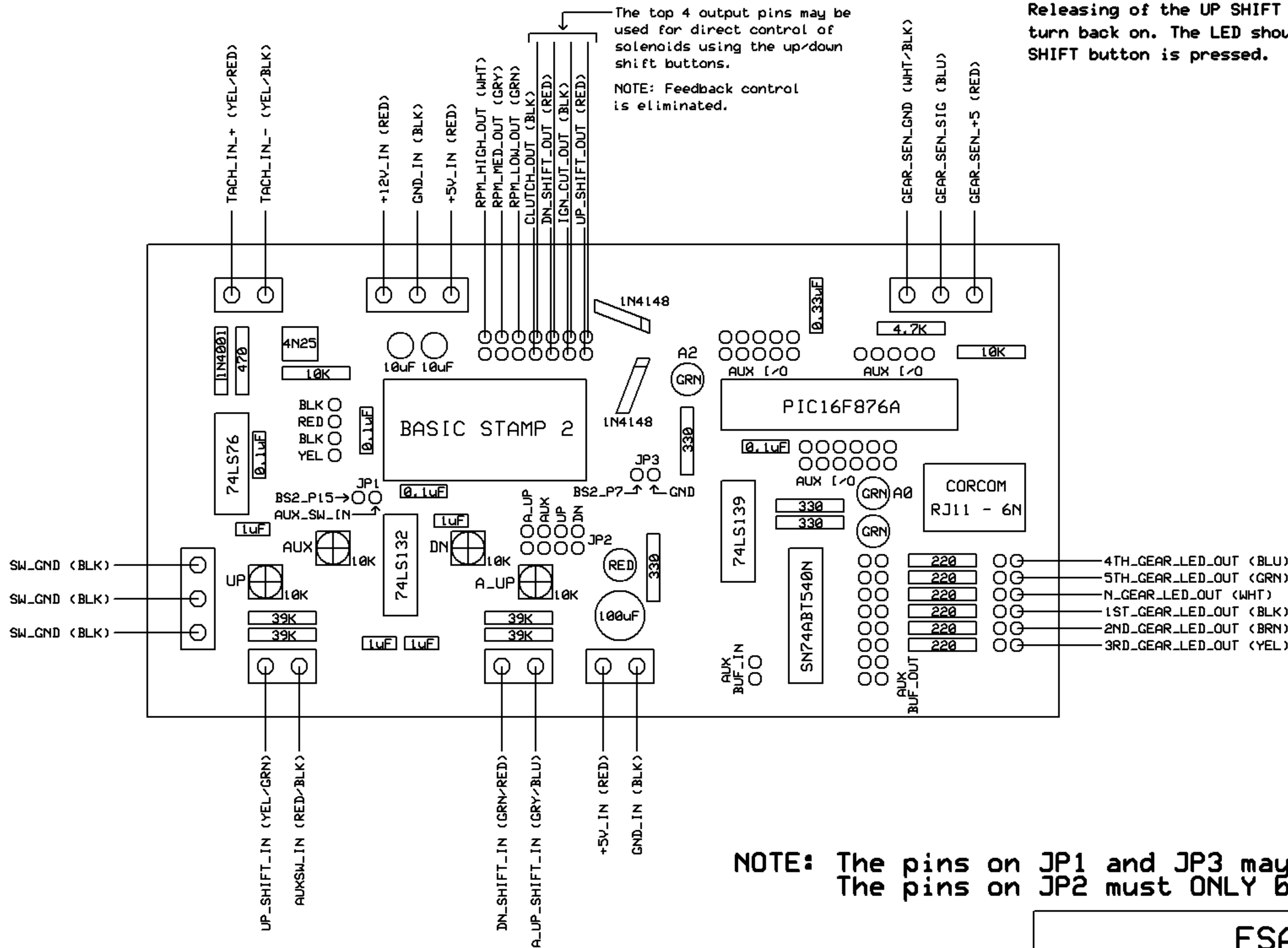


NOTE ON DEBOUNCING: JP2 may be used for tuning the debouncing circuits.

For example, if you want to tune the UP SHIFT button's debouncing circuit, use the jumper to short the second set of pins vertically from the right. The RED LED should be illuminated at this point with the UP SHIFT button NOT PRESSED. Then, tune the FAR LEFT potentiometer while HOLDING the UPSHIFT button PRESSED until the LED goes off. Releasing of the UP SHIFT button should cause the LED to turn back on. The LED should now go off every time the UP SHIFT button is pressed.



NOTE: The pins on JP1 and JP3 may be used separately.
The pins on JP2 must ONLY be shorted VERTICALLY

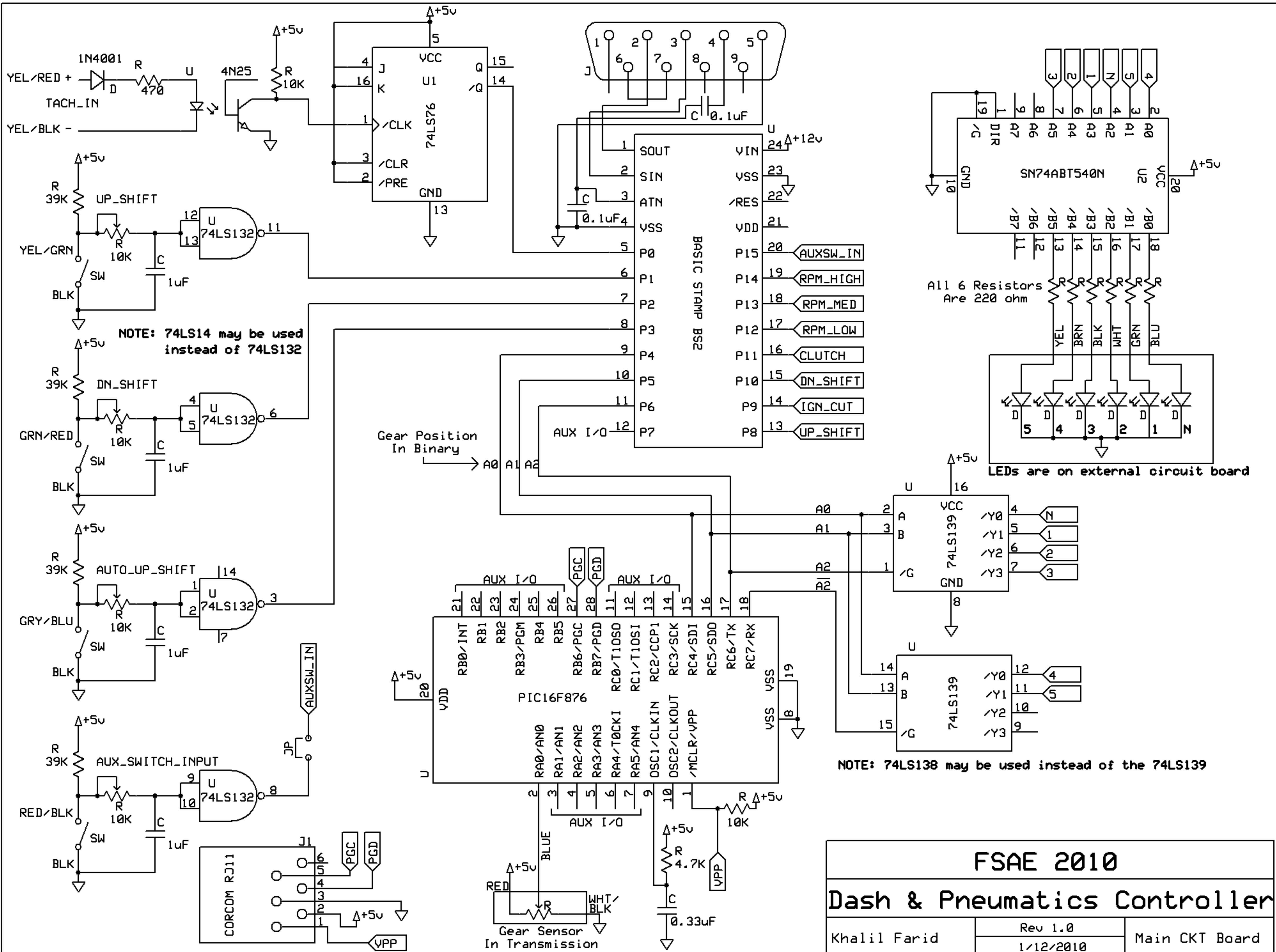
FSAE 2010

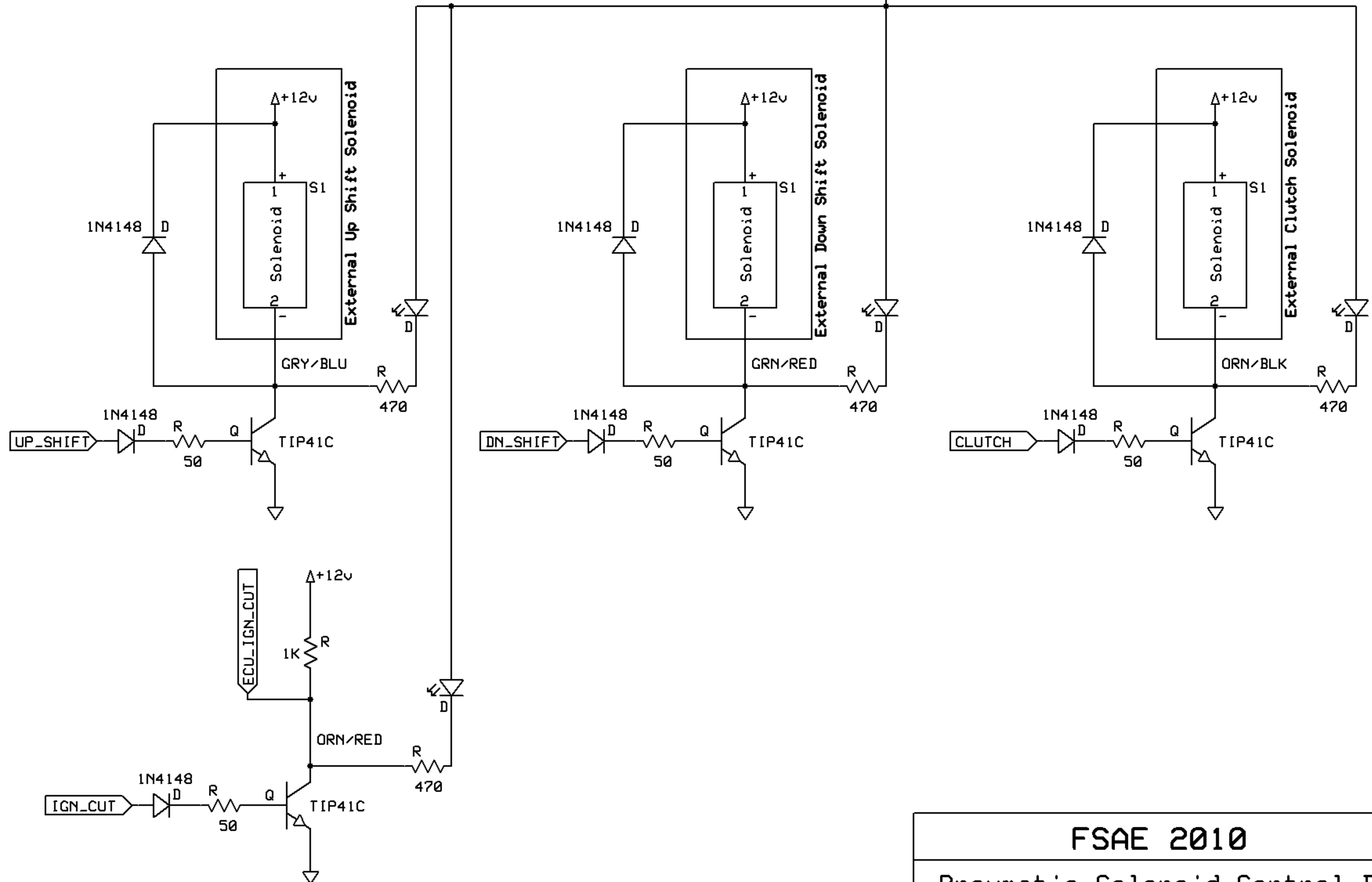
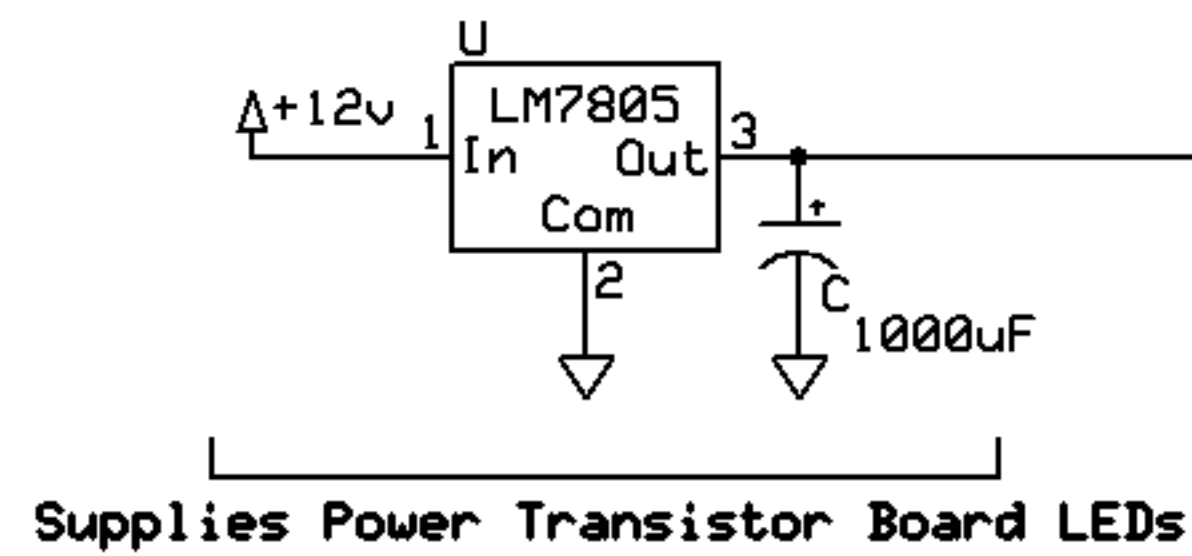
Main Dash/Pneumatics Board Layout

Khalil Farid

Rev 1.0

1/12/2010





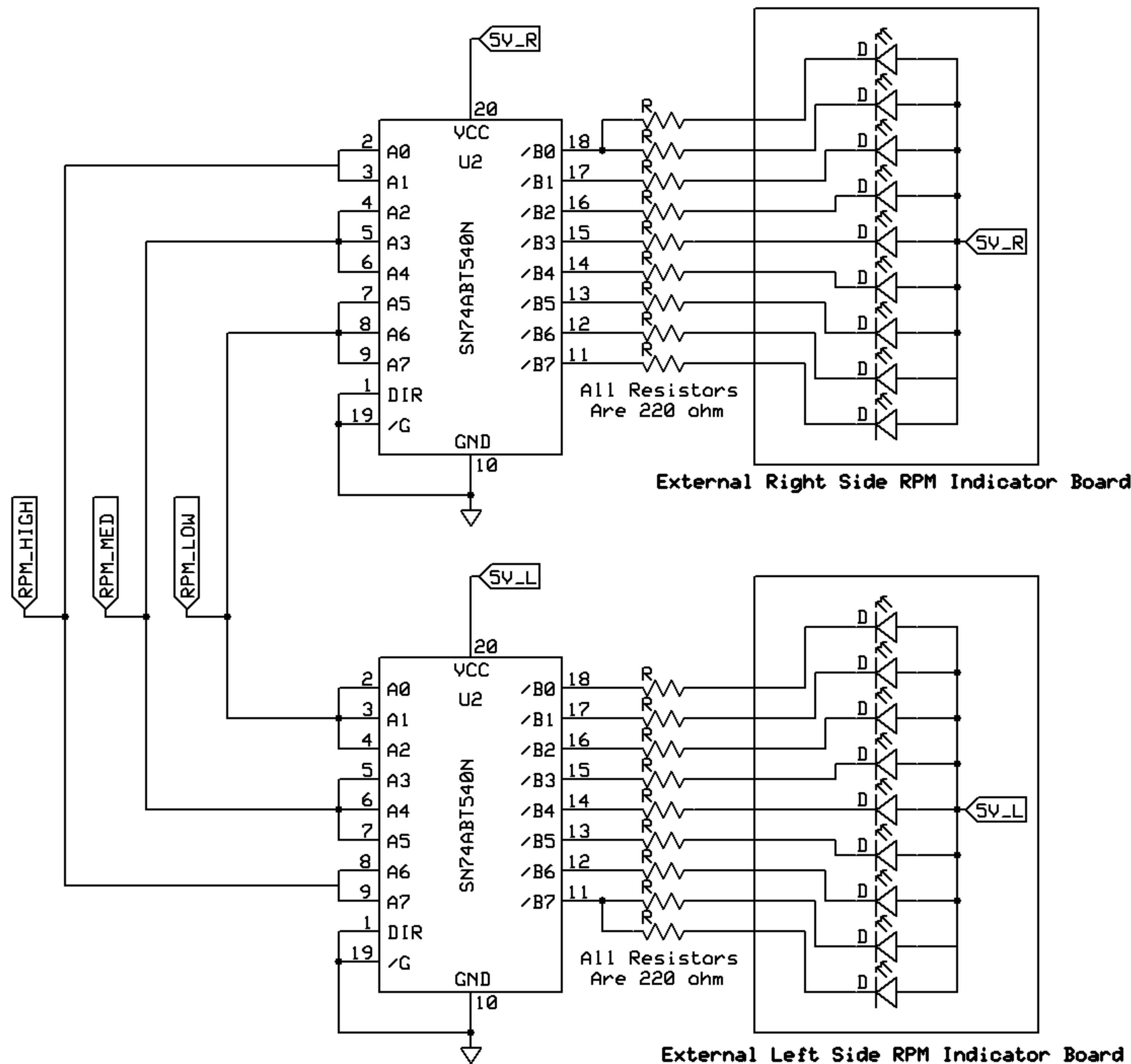
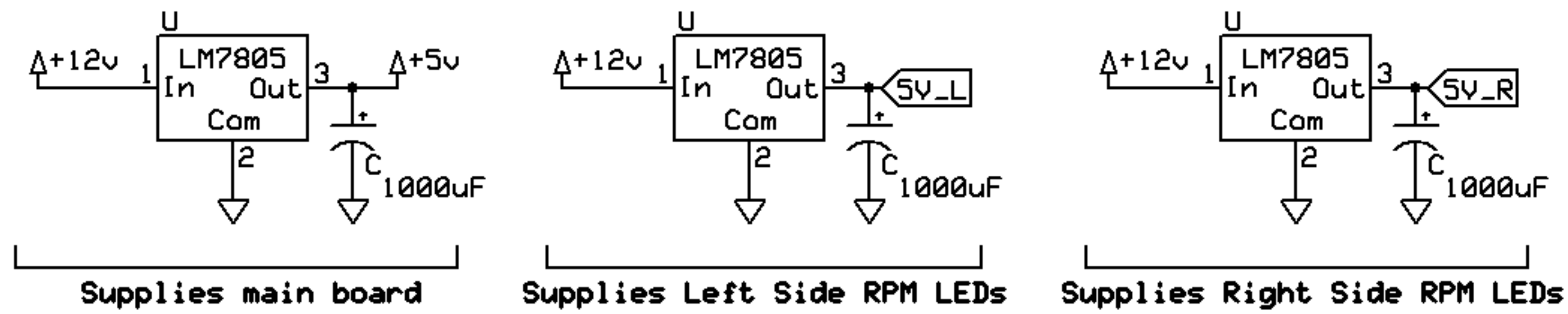
FSAE 2010

Pneumatic Solenoid Control Board

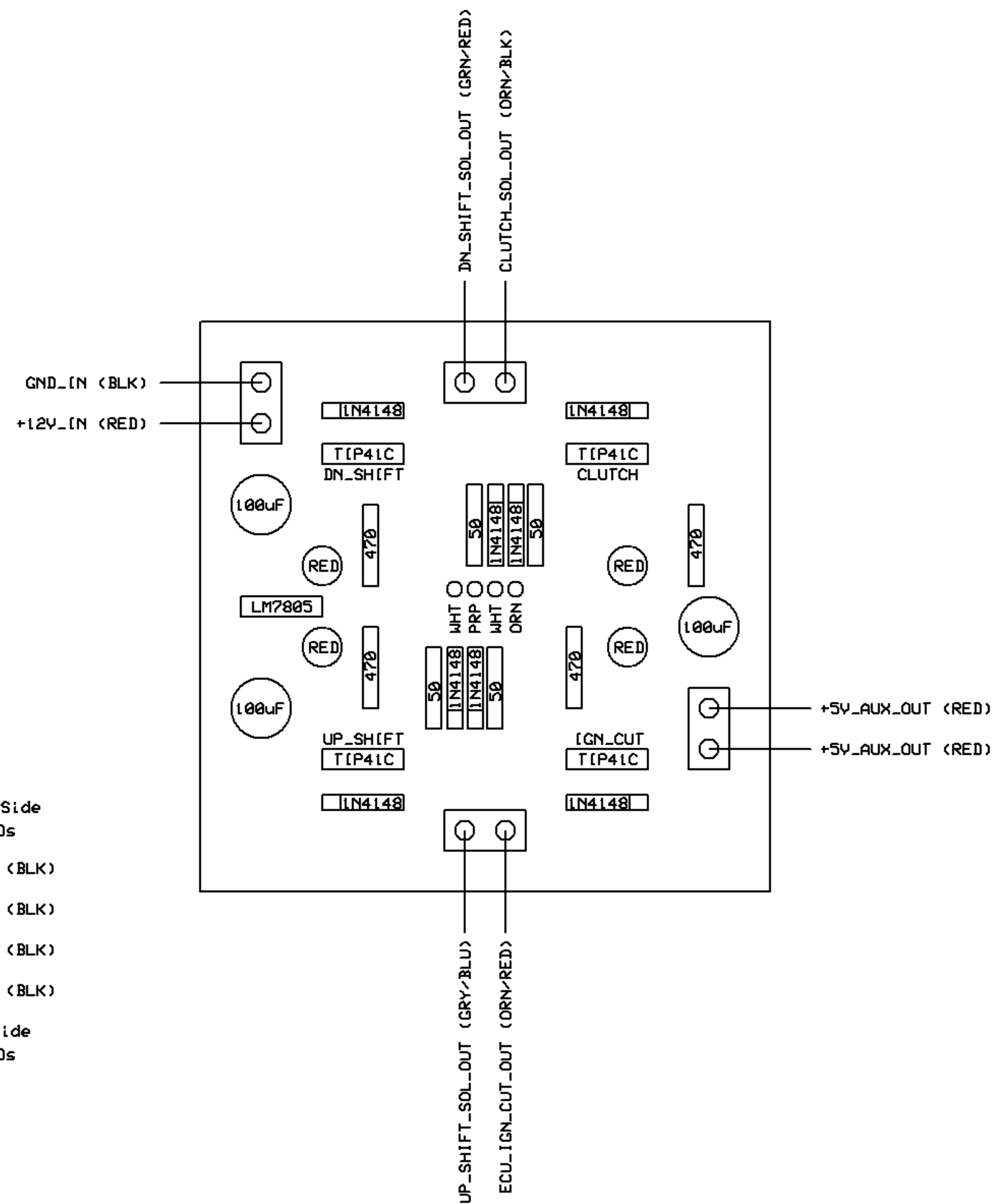
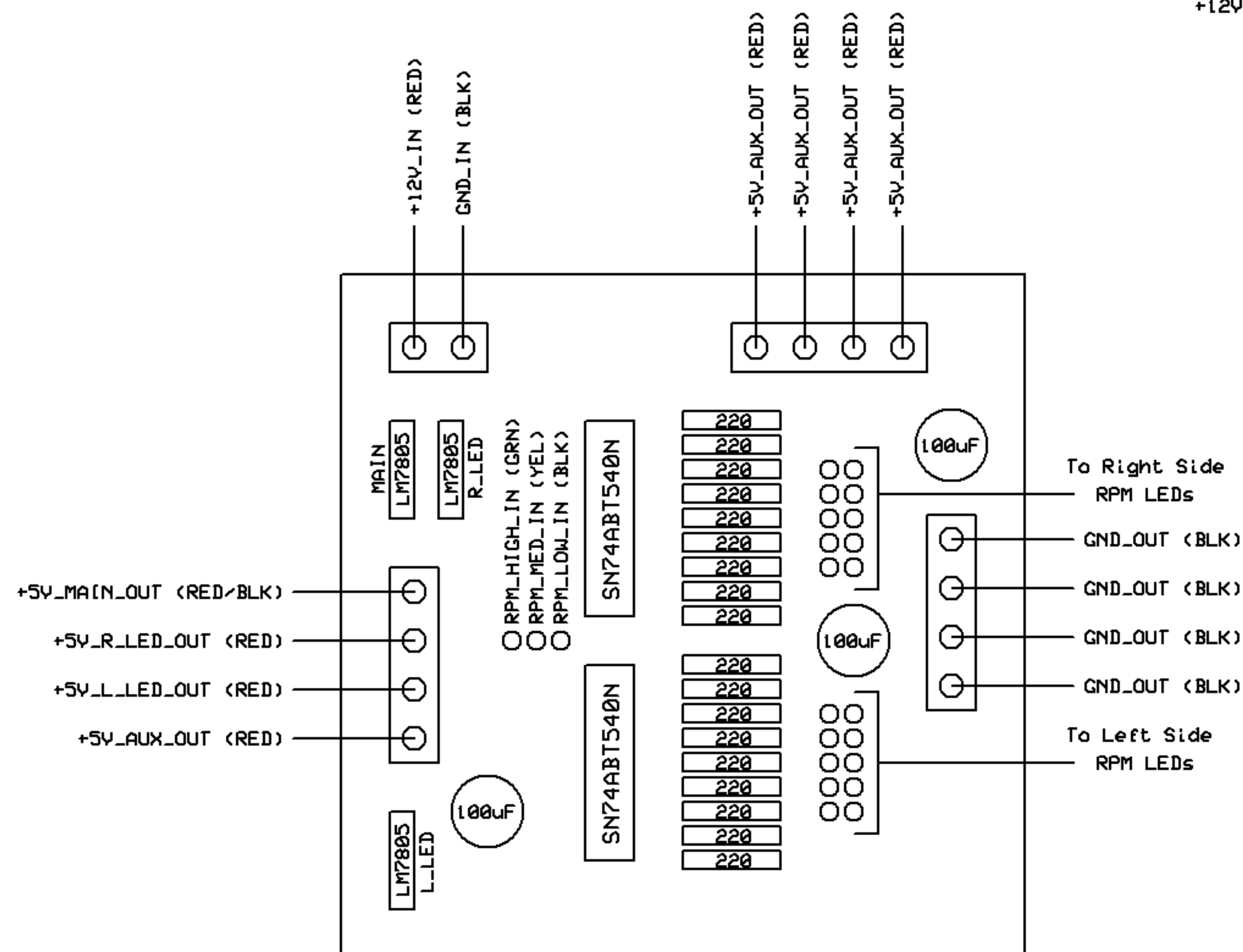
Khalil Farid

Rev 1.0

1/12/2010



FSAE 2010		
RPM LED Buffer CKT Board		
Khalil Farid	Rev 1.0	
	1/12/2010	



FSAE 2010		
RPM/Pneumatic Board Layout		
Khalil Farid	Rev 1.0	
	1/12/2010	