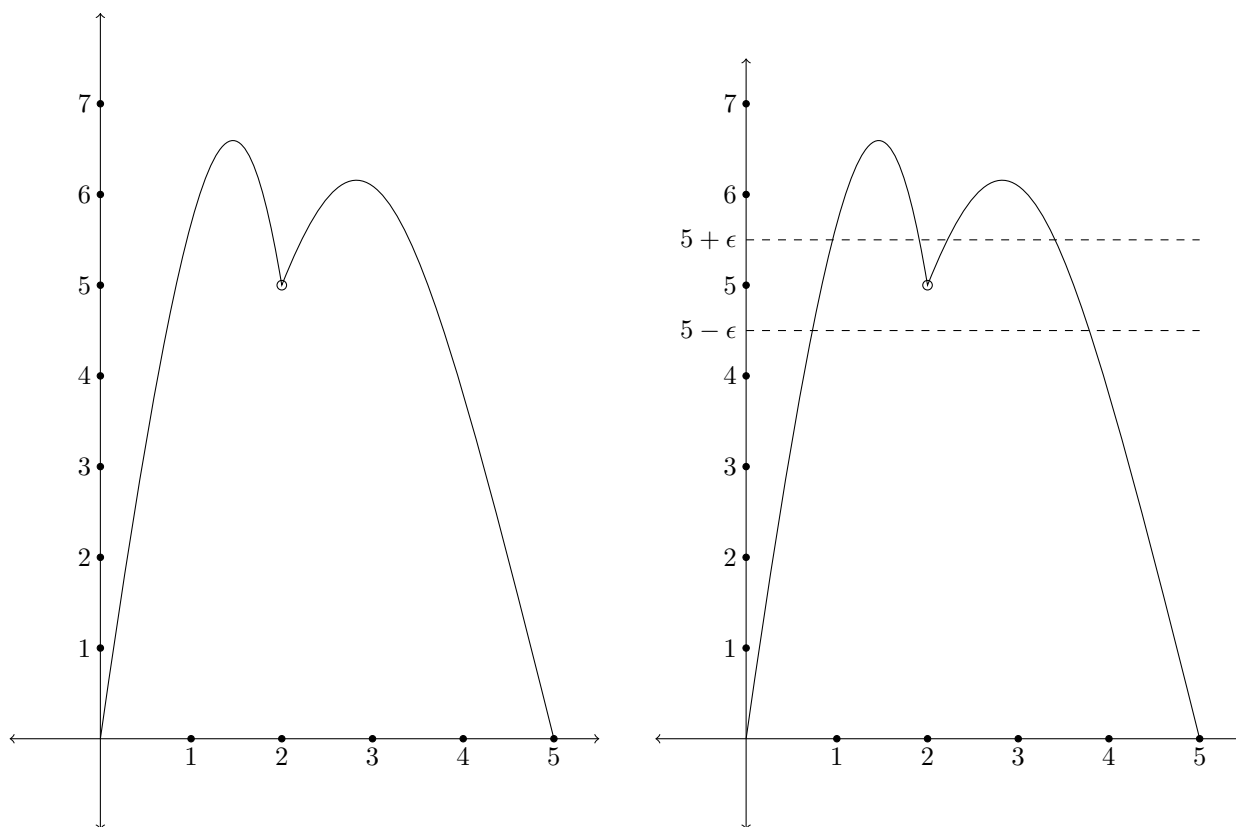


Here is a portion of a continuous function. On the left is the function alone: on the right the two horizontal lines above and below the point $(2, 5)$ have been added.



Now, how small must δ be in order to have $|f(2 + h) - 5| \leq \epsilon$ whenever $|h - 2| \leq \delta$? The graph on the next page gives one possibility (after you have one case that works, clearly any smaller choice will also work).

Next Page Please

Here is a graph with **my** choice of ϵ .

