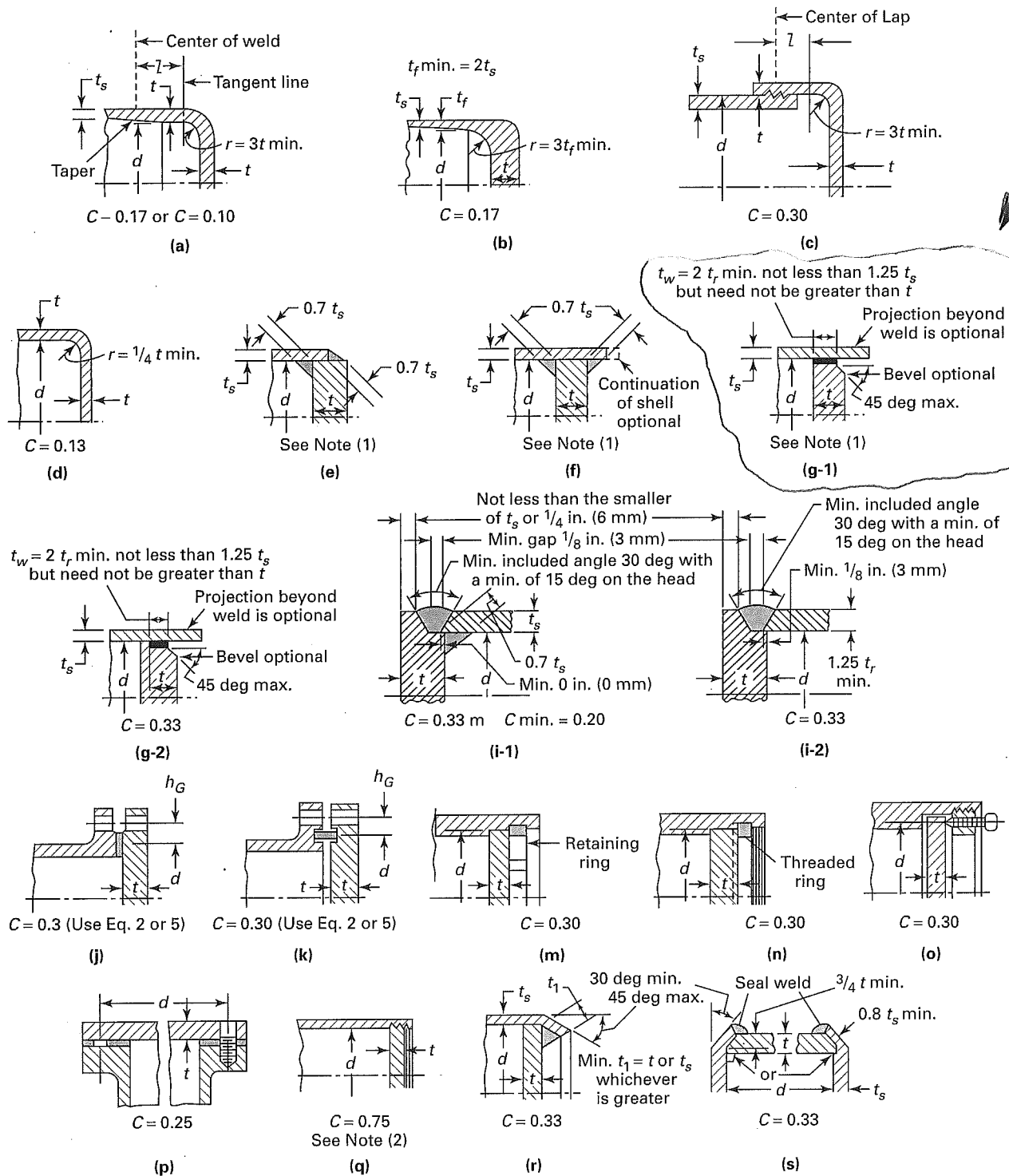


FIG. PG-31 SOME ACCEPTABLE TYPES OF UNSTAYED FLAT HEADS AND COVERS



GENERAL NOTE: The above illustrations are diagrammatic only. Other designs that meet the requirements of PG-31 will be acceptable.

## NOTES:

- (1) For illustrations (e), (f), and (g-1) circular covers,  $C = 0.33$  m,  $C$  min.  $= 0.20$ ; noncircular covers,  $C = 0.33$ .
- (2) When pipe threads are used, see Table PG-39.