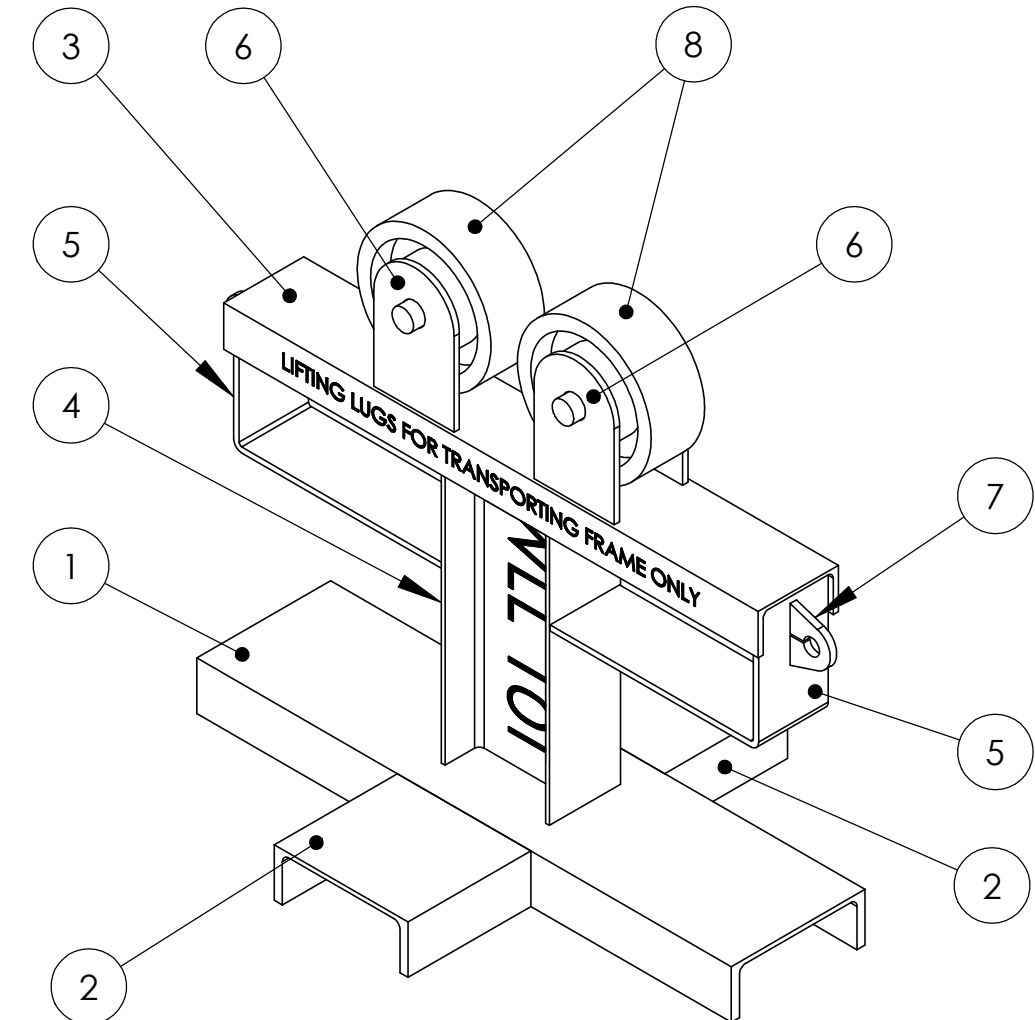


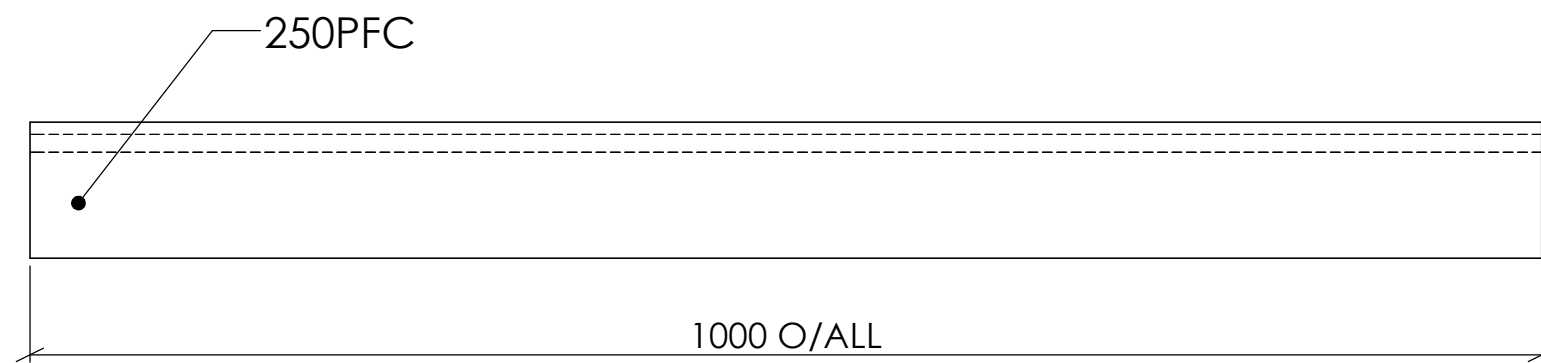
ITEM NO.	PART NUMBER	DESCRIPTION	QTY.
1	CHANNEL 1	250PFC x 1000LG	1
2	CHANNEL 2	250PFC x 230LG	2
3	CHANNEL 3	150PFC x 1000LG	1
4	BEAM 1	200UB22 x 545LG	1
5	FLAT 1	130 x 10FL x 620LG	2
6	FLAT 2	150 x 10FL x 230LG	4
7	LUG 1	2 TONNE LIFTING LUG	2
8	CASTOR 1	RICHMOND WHEEL & CASTOR CO. PART# PU1049	2



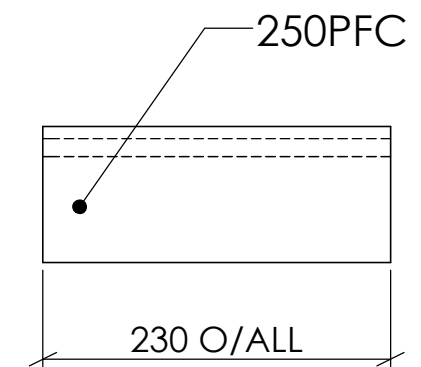
GENERAL NOTES:

- ALL ITEMS SHALL BE MADE FROM GRADE 250 MILD STEEL COMPLYING WITH AS3678 U.O.N.
- CASTORS SHALL BE PURCHASED FROM RICHMOND WHEEL & CASTOR COMPANY - PART# PU1049
- USE SPLIT PINS OR SOME OTHER SUITABLE MEANS TO LOCATE CASTORS
- ALL LIFTING LUGS SHALL BE FABRICATED & WELDED IN ACCORDANCE WITH RIO TINTO DRAWING P-009-110
- ALL WELDS SHALL BE 6mm CONTINUOUS FILLET OR FULL PENETRATION SQUARE BUTT IN ACCORDANCE WITH AS1554.1SP

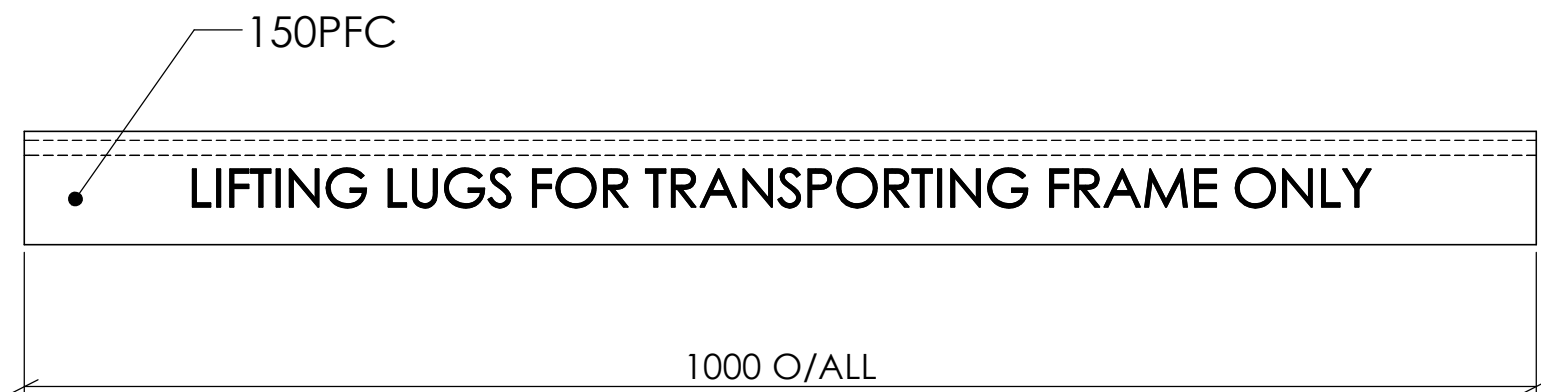
Copyright Rio Tinto All rights reserved		<div>RioTinto</div> <div>RIO TINTO ACN 107 210 248</div> <div>Mine Operations PO Box 22 Tom Price WA 6751</div>	SCALE N.T.S.	WEIGHT [kg] 168.16	QTY 4
			Project Name BELT CREW		
			Assembly Name 10T PULLEY STANDS		
			Drawing Name GENERAL ARRANGEMENT		
Designed	9/2/2011	CONOR EGAN			
Drawn	9/2/2011	CONOR EGAN			
Checked	19/2/2011	JOSH LEVY			
Approved	19/2/2011	JOSH LEVY	Sheet 1 / 2		



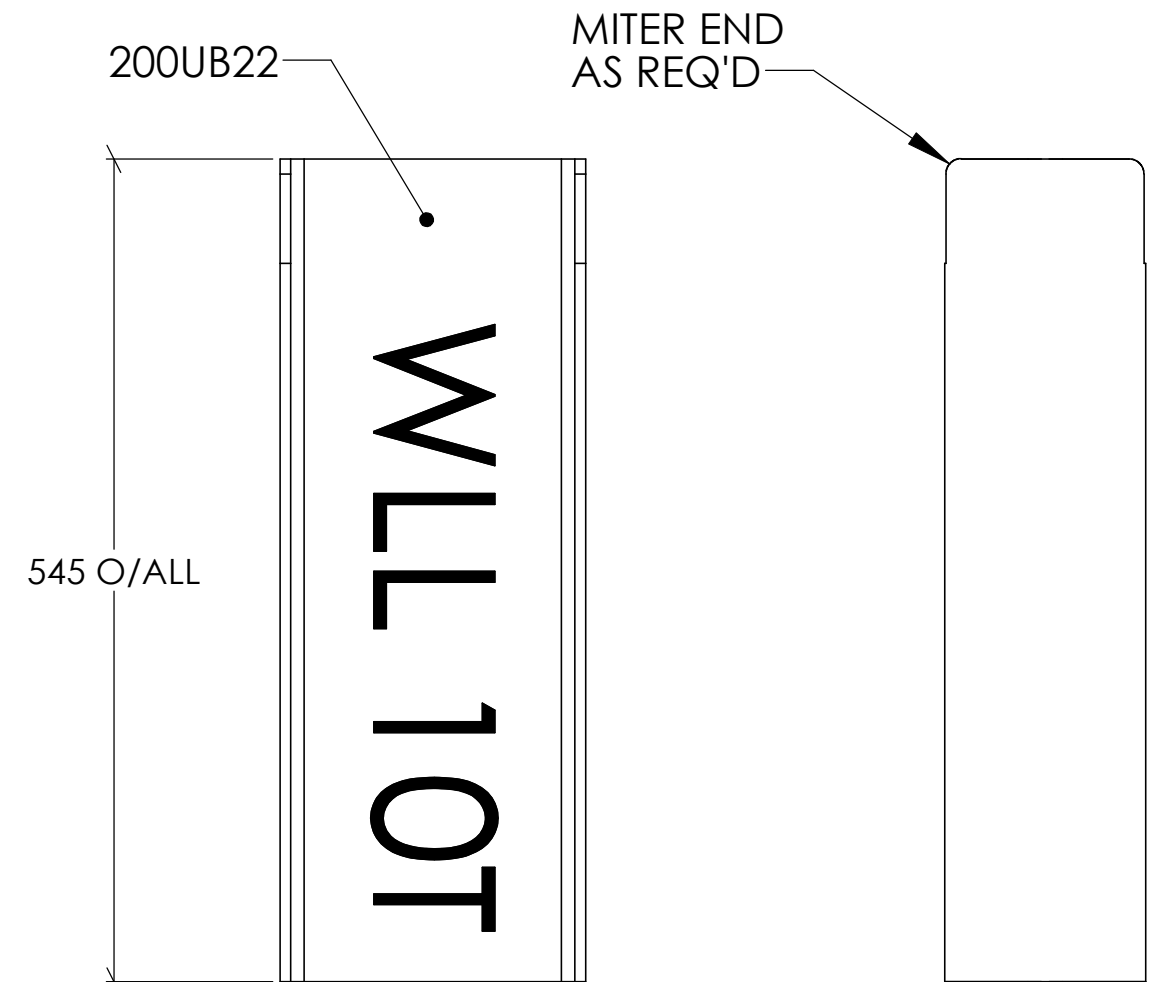
ITEM NO. 1 - 1 OFF AS DRAWN



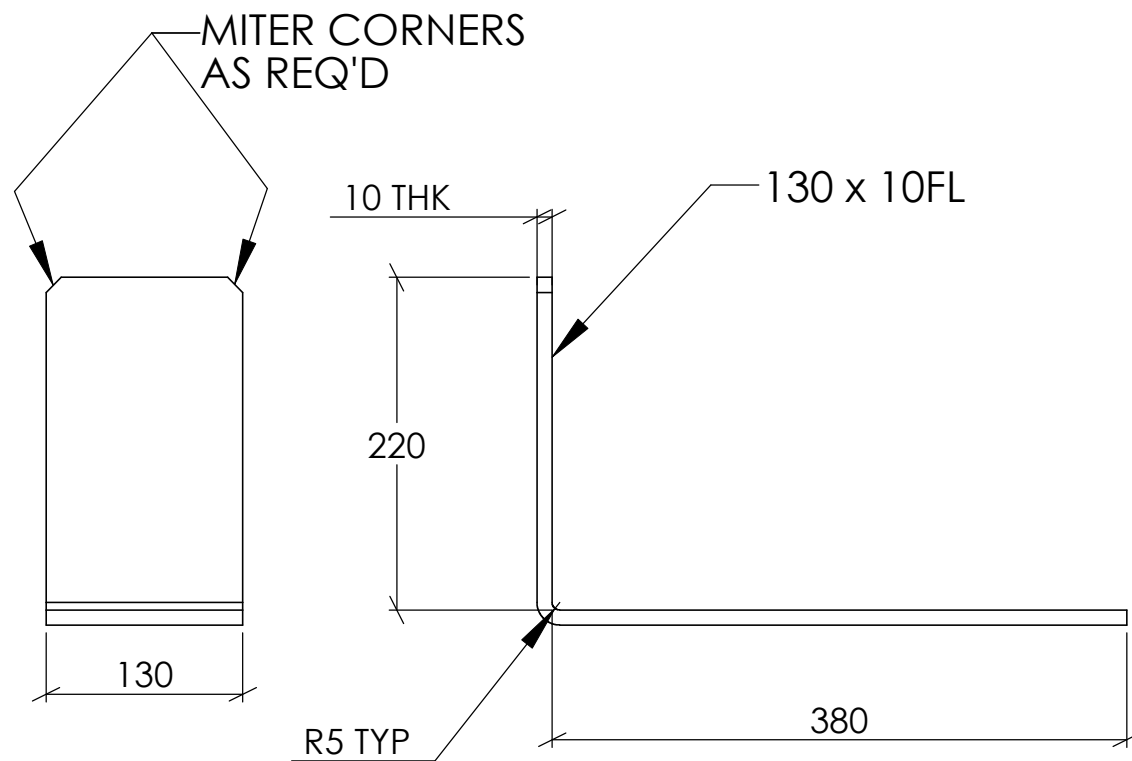
ITEM NO. 2 - 2 OFF AS DRAWN



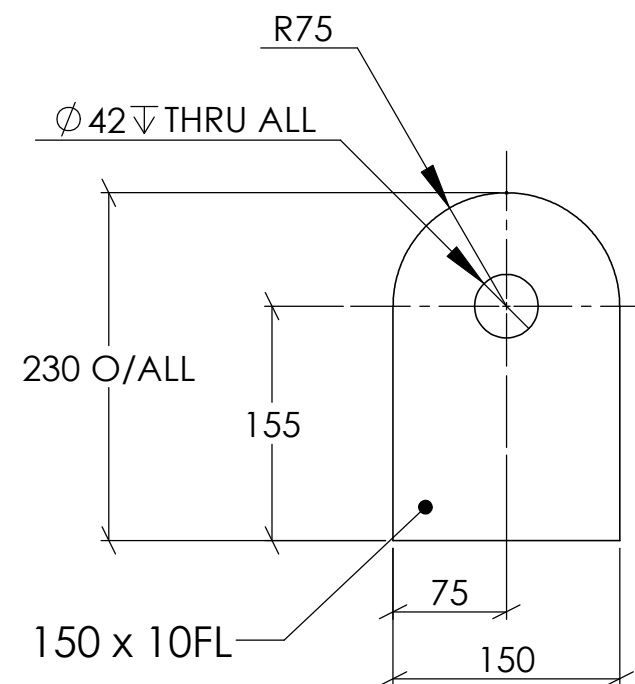
ITEM NO. 3 - 1 OFF AS DRAWN



ITEM NO. 4 - 1 OFF AS DRAWN



ITEM NO. 5 - 2 OFF AS DRAWN



ITEM NO. 6 - 4 OFF AS DRAWN

Copyright Rio Tinto All rights reserved		<div>RioTinto</div> <div>RIO TINTO ACN 107 210 248</div> <div>Mine Operations PO Box 22 Tom Price WA 6751</div>	SCALE N.T.S.	WEIGHT [kg]	QTY 4
			Project Name BELT CREW		
			Assembly Name 10T PULLEY STANDS		
			Drawing Name FABRICATION DRAWING		
Designed	9/2/2011	CONOR EGAN			
Drawn	9/2/2011	CONOR EGAN			
Checked	19/2/2011	JOSH LEVY			
Approved	19/2/2011	JOSH LEVY	Sheet 2 / 2		