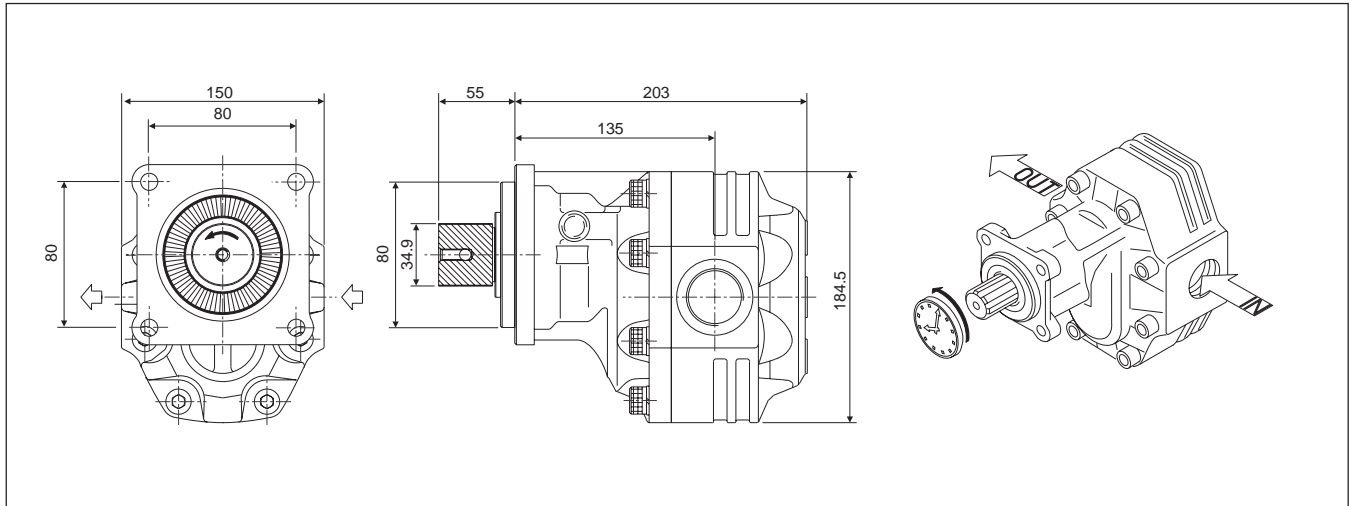


HYVA GEAR PUMPS



EXTERNAL GEAR TYPE

Hyva	gear pump type :	gear pump 073L - L - 4H
page # 1 / 2	part number :	145 62 730
	rotation :	anti clock wise seen from front side of pump

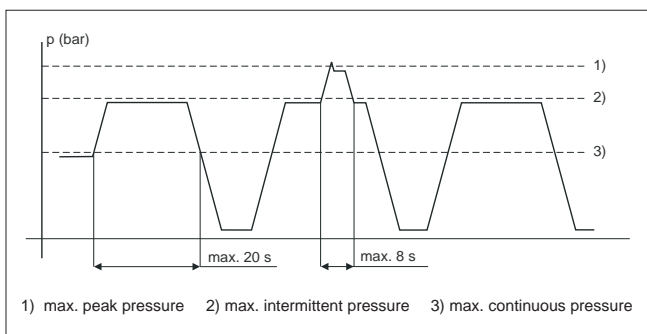


specifications

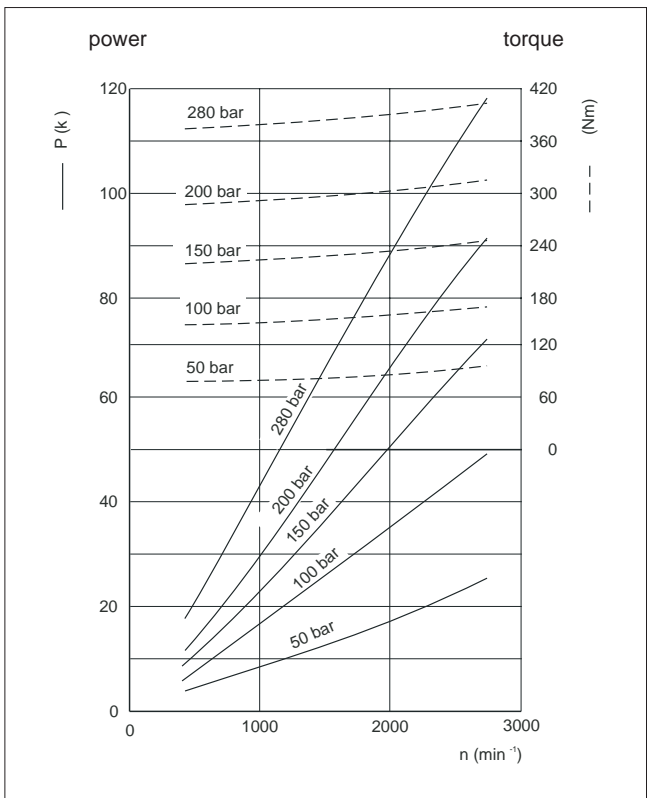
displacement per revolution	:	72,09	cm ³
maximum peak pressure	:	315	bar
maximum intermittent pressure	:	300	bar
maximum continuous pressure	:	280	bar
maximum speed without load	:	4200	min ⁻¹
max. speed at intermittent press.	:	2700	min ⁻¹
min. speed at intermittent press.	:	300	min ⁻¹
oil temperature range	:	-25 ⇄ 110	°C
inlet pressure range (suction side)	:	0,7 ⇄ 3	bar (abs)
recommended oil viscosity range	:	12 ⇄ 100	mm ² /s (cSt)
maximum starting viscosity	:	750	mm ² /s (cSt)
filtration :			
- working pressure < 200 bar	:	25	m
- working pressure > 200 bar	:	10	m
connection :			
- inlet - straight internal thread	:	1	" B.S.P.
- outlet - straight internal thread	:	0,75	" B.S.P.
minimum suction hose bore diameter	:	1,75	inch
shaft DIN 5462	:	8*32*36	mm
mass	:	21,6	kg
noise level at 900 min ⁻¹ and 100 bar	:	66,4	dB(A)
noise level at 1500 min ⁻¹ and 100 bar	:	68,9	dB(A)

efficiency diagram on request

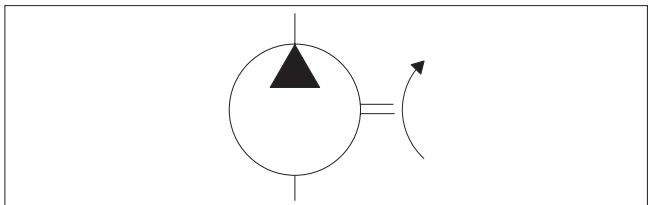
pressure definition



power and torque



hydraulic pump symbol



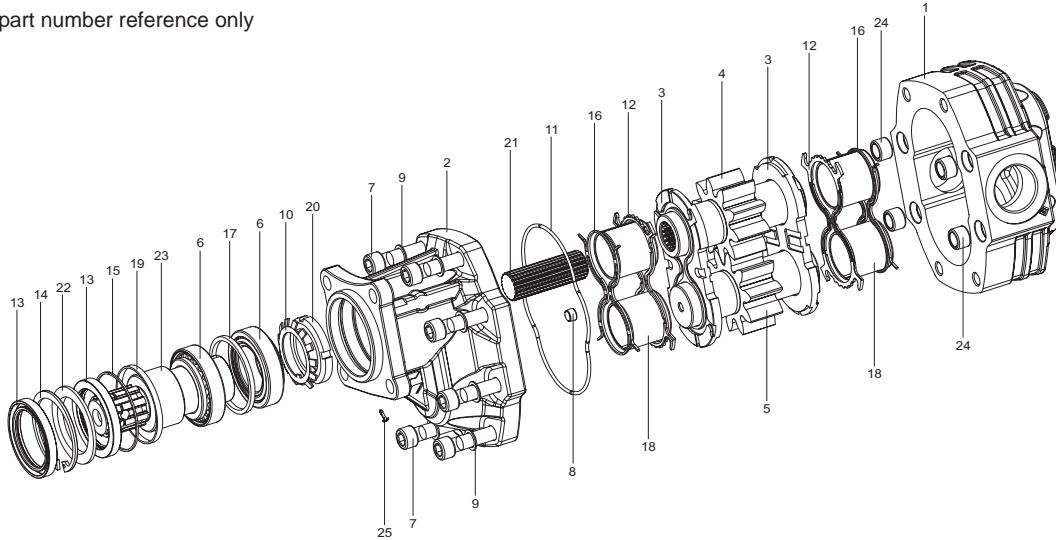
HYVA GEAR PUMPS



EXTERNAL GEAR TYPE

Hyva	gear pump type :	gear pump 073L - L - 4H
page # 2 / 2	part number :	145 62 730
	rotation :	anti clock wise seen from front side of pump

drawing for part number reference only



spare part list gear pump

145 62 730

pos.	code no.	description	qty.
1	145 62 730 01	body	1
2	145 62 730 02	front cover	1
3	022 59 370	thrust plate	2
4	145 62 730 04	drive gear	1
5	145 62 730 05	driven gear	1
6	145 62 730 06	roller bearing	2
7	145 62 730 07	screw	8
8	145 62 730 08	grub screw	1
9	145 62 730 09	washer	8
10	145 62 730 10	lock washer	1
11	145 62 730 11	housing seal	1
12	145 62 730 12	seal	2
13	145 62 730 13	shaft seal	2
14	145 62 730 14	circlip	1
15	145 62 730 15	locking ring	1
16	145 62 730 16	back-up ring	2
17	145 62 730 17	spacer	1
18	145 62 730 18	sleeve bearing	4
19	145 62 730 19	spacer for cover	1
20	145 62 730 20	threaded locking ring	1
21	145 62 730 21	spline shaft	1
22	145 62 730 22	back-up washer	1
23	145 62 730 23	support shaft	1
24	145 62 730 24	steel bushes	4
25	145 62 730 25	protection plug	1
	024 60 090	seal kit complete (comprises 11, 12, 13 & 16)	1

general information and mounting possibilities.

The mentioned data on page 1 is for mineral based oil.
For other fluids, please contact our engineering dept.

The filtration as mentioned is for tippers only. For different applications we advise filtration according ISO 4406 class 17/14.

To avoid cavitation, the suction hose must be kept as short and straight as possible, and the minimum oil level in the oil tank must be above the inlet of the pump.