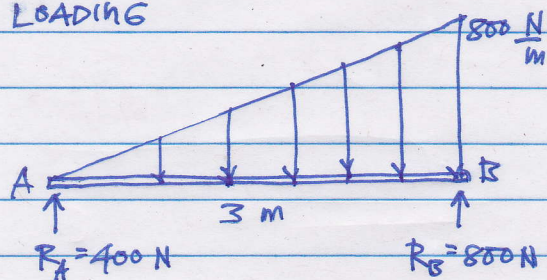
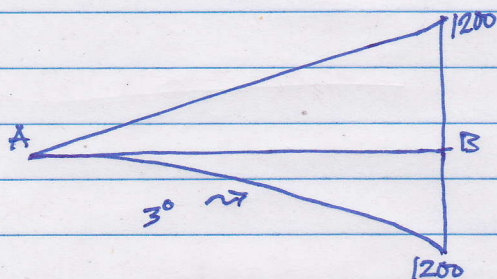


SOLUTION 1:

LOADING



M-DIAGRAM (1)

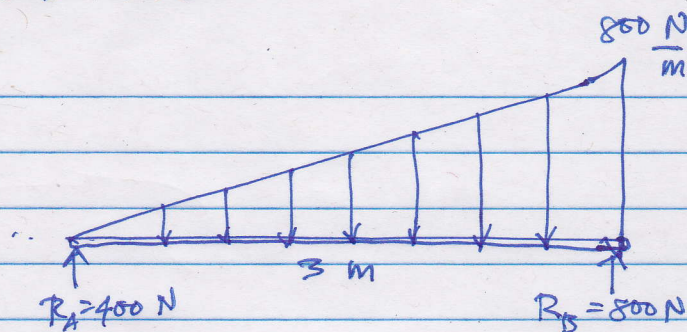


SOLVING FOR  $\frac{GA_2b}{L}$

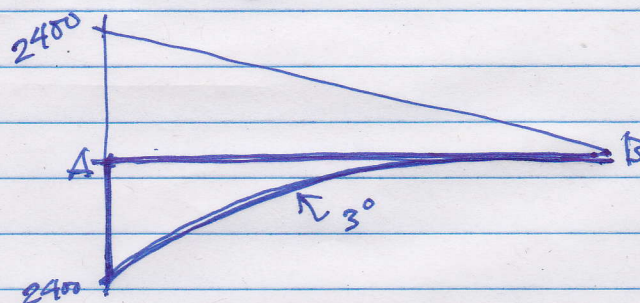
$$\frac{GA_2b}{L} = \frac{G}{3} \left[ \frac{(1200)(3)}{2} \left( \frac{1}{1} \right) - \frac{(200)(3)}{4} \left( \frac{3}{5} \right) \right]$$

$$\frac{GA_2b}{L} = 2520 \text{ N}\cdot\text{m}^2$$

SOLUTION 2:



M-DIAGRAM (2)



SOLVING FOR  $\frac{GA_2b}{L}$

$$\frac{GA_2b}{L} = \frac{G}{3} \left[ \frac{(2400)(3)}{2} \left( \frac{2}{1} \right) - \frac{(2400)(3)}{4} \left( \frac{4}{5} \right) \left( \frac{3}{1} \right) \right]$$

$$\frac{GA_2b}{L} = 5760 \text{ N}\cdot\text{m}^2$$

QUESTION: BAKIT MAGKAIBA ANG ANSWER NG SOL 1 ≠ SOL 2.

ANG CORRECT ANSWER PO AY SOL 1.... CONFUSE LANG PO AKO KUNG BAKIT MALI UNG SOL 2... I SUSPECT MALI UNG M-DIAG KO FOR UNIFORMLY VAR LOAD SA SOL 2.. PERO PARANG TAMA NAMAN..

ANO PO KYA ANG "FLAW"/"MISTAKE OR ERROR"

NG SOL 2:?

PLEASE HELP ME SR! THANKS!